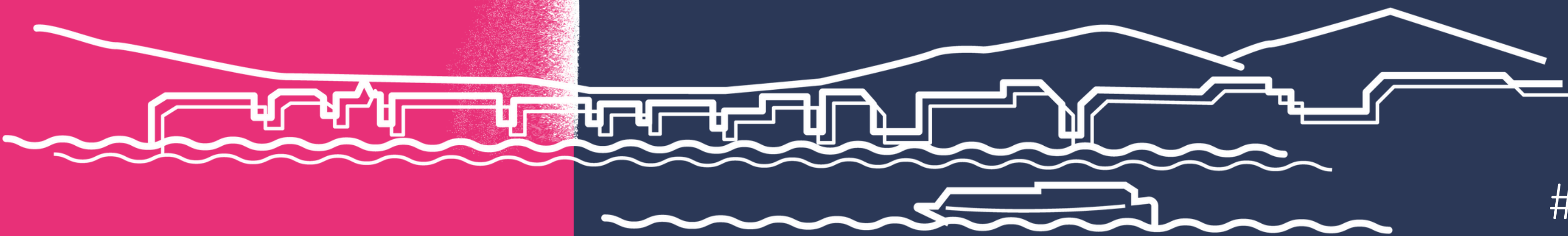


# A little red dot's story:

Singapore's journey of translating evidence to practice

Phyllis Kim  
Agency for Care Effectiveness  
(ACE), Singapore

#GIN2025





# Singapore snapshot

**Total land area ~730 km<sup>2</sup>**  
(~half the size of London)



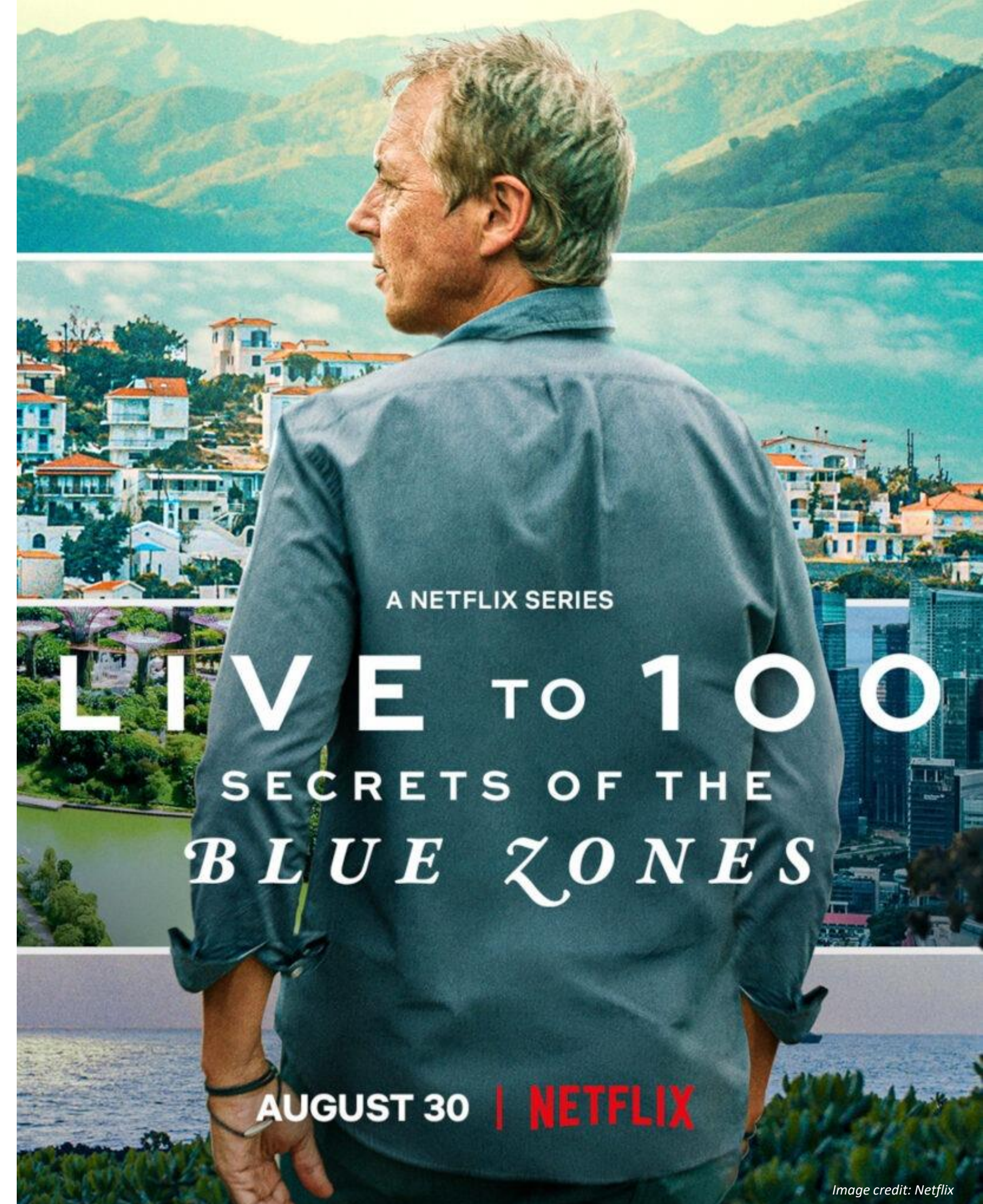
**Total population ~5.9m**



## Blue Zone 2.0

*“In 1960, the average newborn in Singapore could expect to live only 65 years. Now, one lifetime later, life expectancy has grown by almost 20 years.”*

*Excerpt from the Blue Zone*





# Our life expectancy gains are accompanied by new challenges



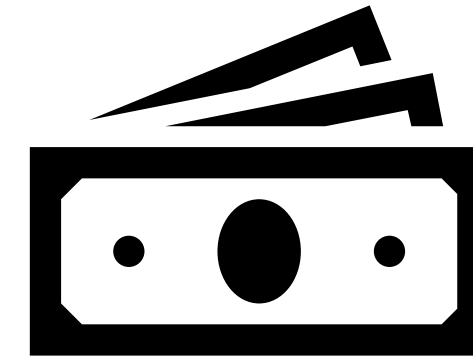
More  
citizens  
entering old  
age



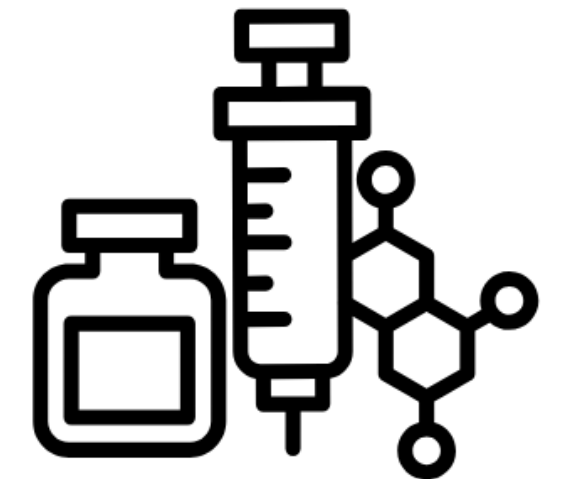
More  
chronic  
diseases



Increasing age-  
specific  
utilization rates



Price inflation



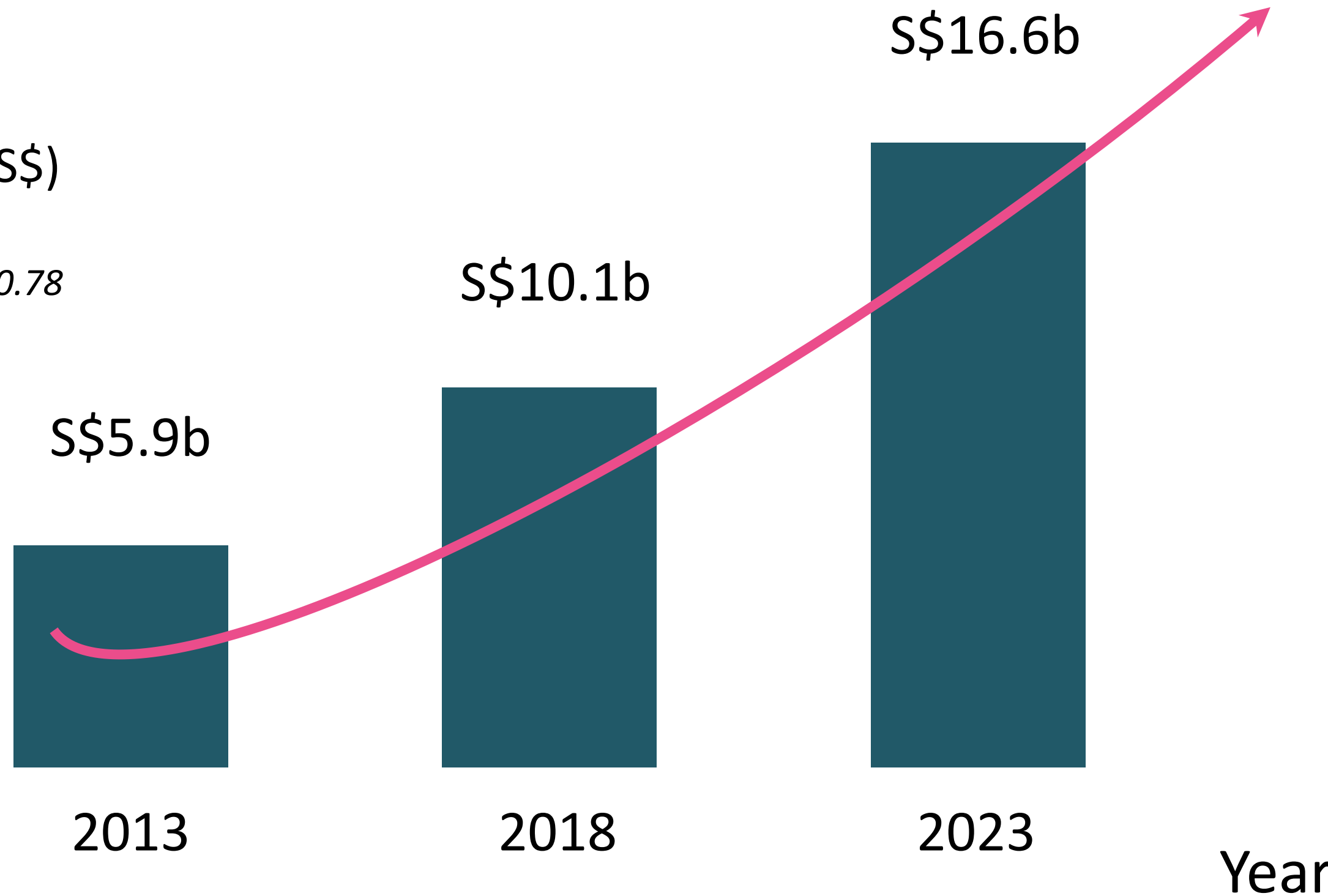
Real unit cost  
growth



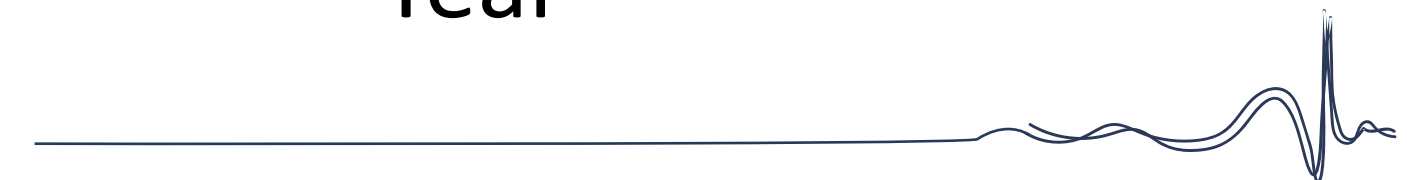
# Our national healthcare expenditure is rising rapidly

Singapore dollars (S\$)

*1 SGD converts to ~ USD 0.78*



CAGR of ~**10%** in  
the past decade



**Best health outcomes,  
sustainably delivered**

$$\text{Value} = \frac{\text{Patient Health Outcomes}}{\text{Cost}}$$





*We serve:*

*Payers*



Government  
subsidies



Compulsory  
health  
savings



Private  
health  
insurance

*Providers*



ETPO

*Patients*





## Focus on 3 issues:

1. How do we decide on guideline topics?
2. How should we implement them?
3. What would success look like?








## 1. Deciding on guideline topics

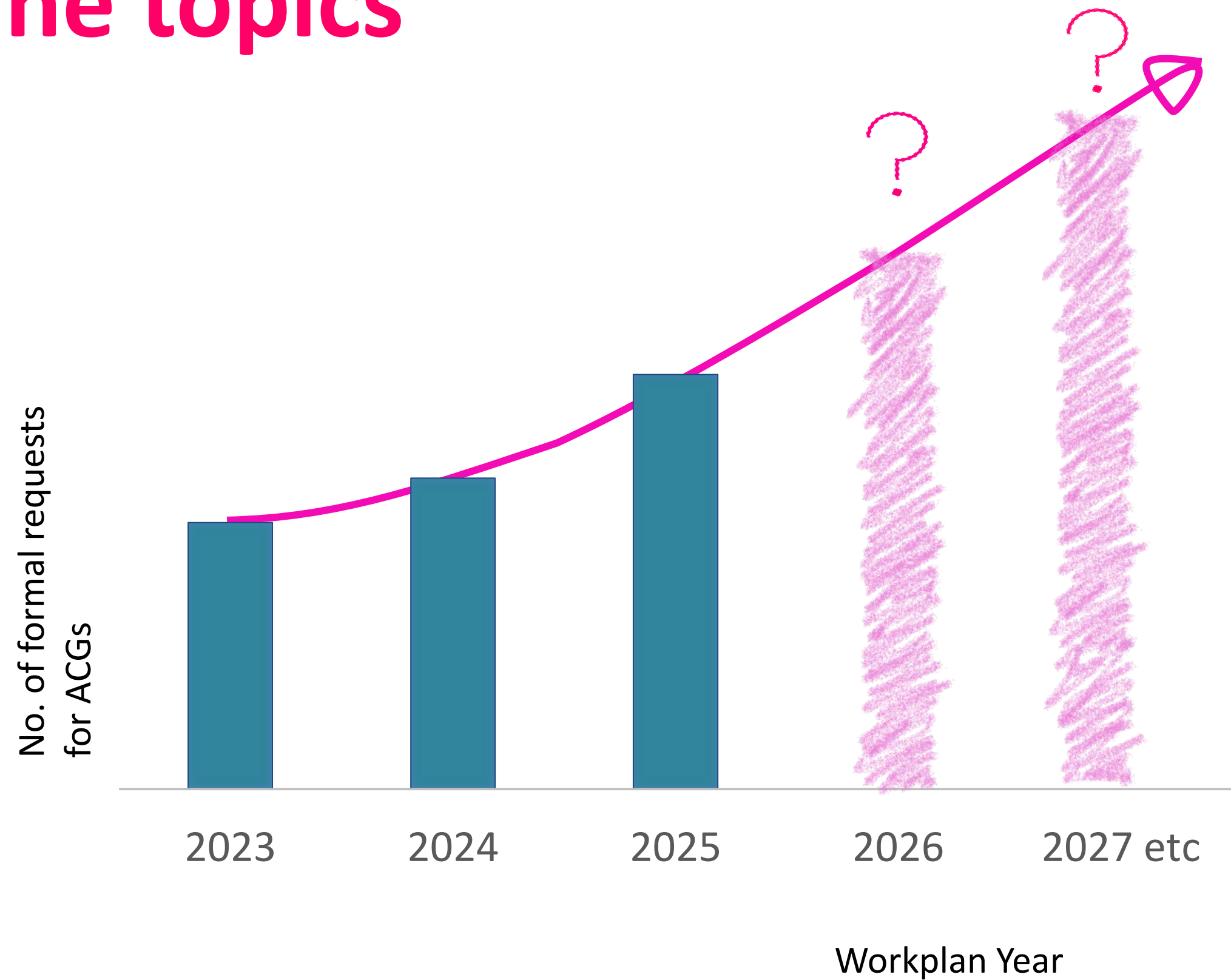
*Night market street red lanterns, Chinatown, Singapore*



# Crowdsourcing for potential guideline topics

ACE Clinical Guideline Topic Submission Form

 30 mins estimated time to complete





# ① The funnel framework

## Inpatient data

- GBD DALYs
- Utilisation (inpatient bill sizes)



## Primary care data

- Doctor visits
- Attributable cost from the doctor visits



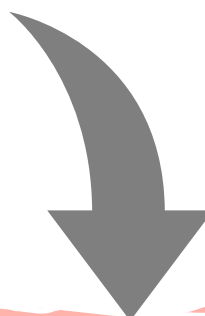
### 22 groups (GBD framework):

HIV/AIDS/STIs, Respiratory infections & Tuberculosis, Enteric infections, Neglected tropical diseases & Malaria, Maternal & Neonatal disorders, Nutritional deficiencies, Neoplasms, Cardiovascular diseases, Chronic respiratory diseases, Digestive diseases, Neurological disorders, Mental disorders, Substance use disorders, Diabetes & kidney diseases, Skin and subcutaneous diseases, Sense organ diseases, Musculoskeletal disorders, Transport injuries, Unintentional injuries, Self-harm & interpersonal violence

### Shortlisted 7 groups:

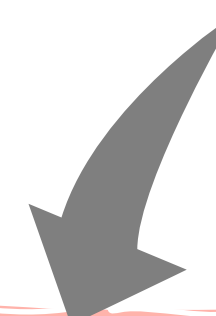
Neoplasms, Cardiovascular diseases, Chronic respiratory diseases, Neurological disorders, Mental disorders, Diabetes & kidney diseases, Musculoskeletal disorders

## ② Emerging insights



## Updates of published ACGs (5-yearly)

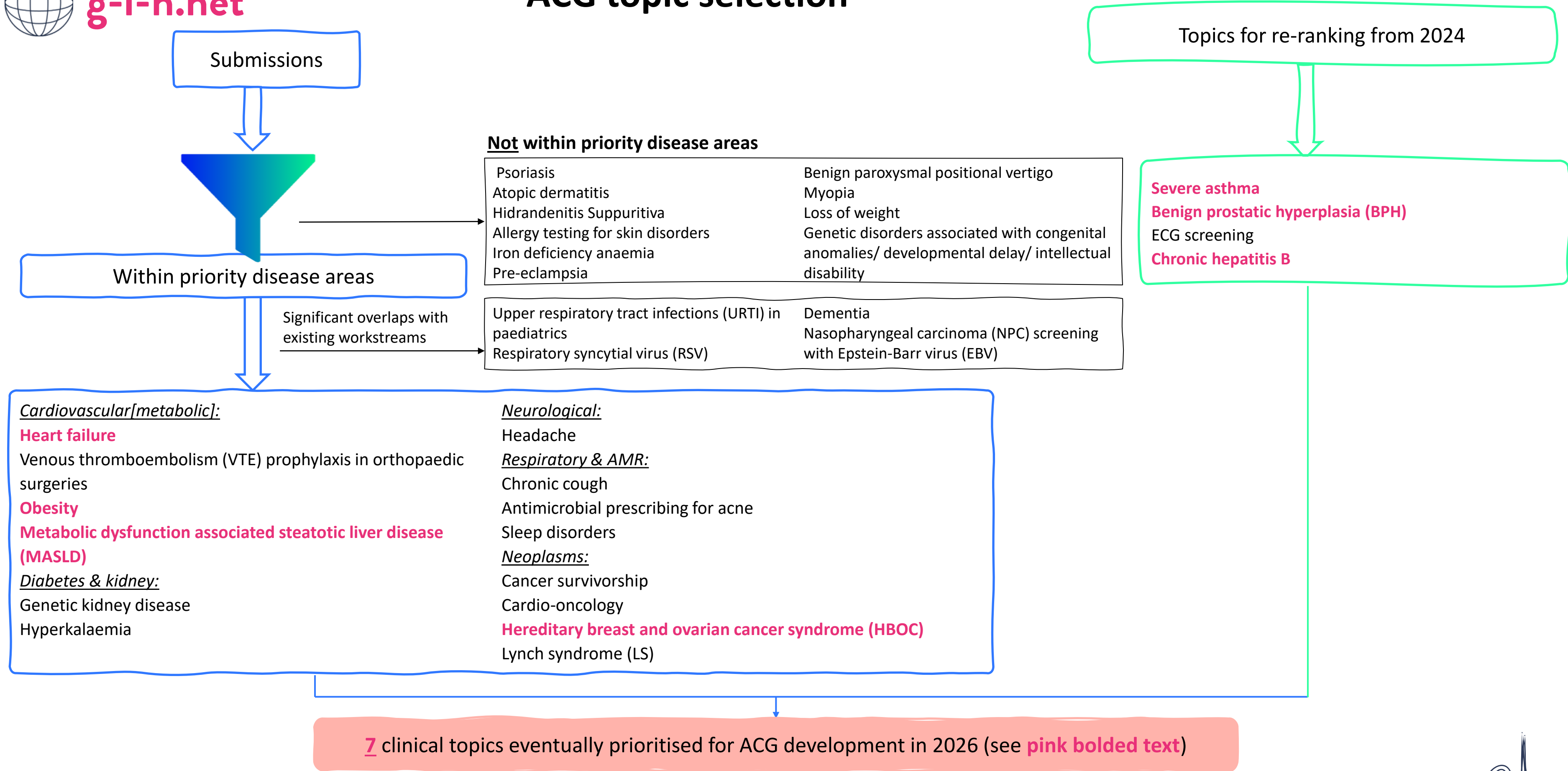
③



**Ranking & prioritization by the Evidence to Practice Advisory Committee (ETPAC)**



# ACG topic selection



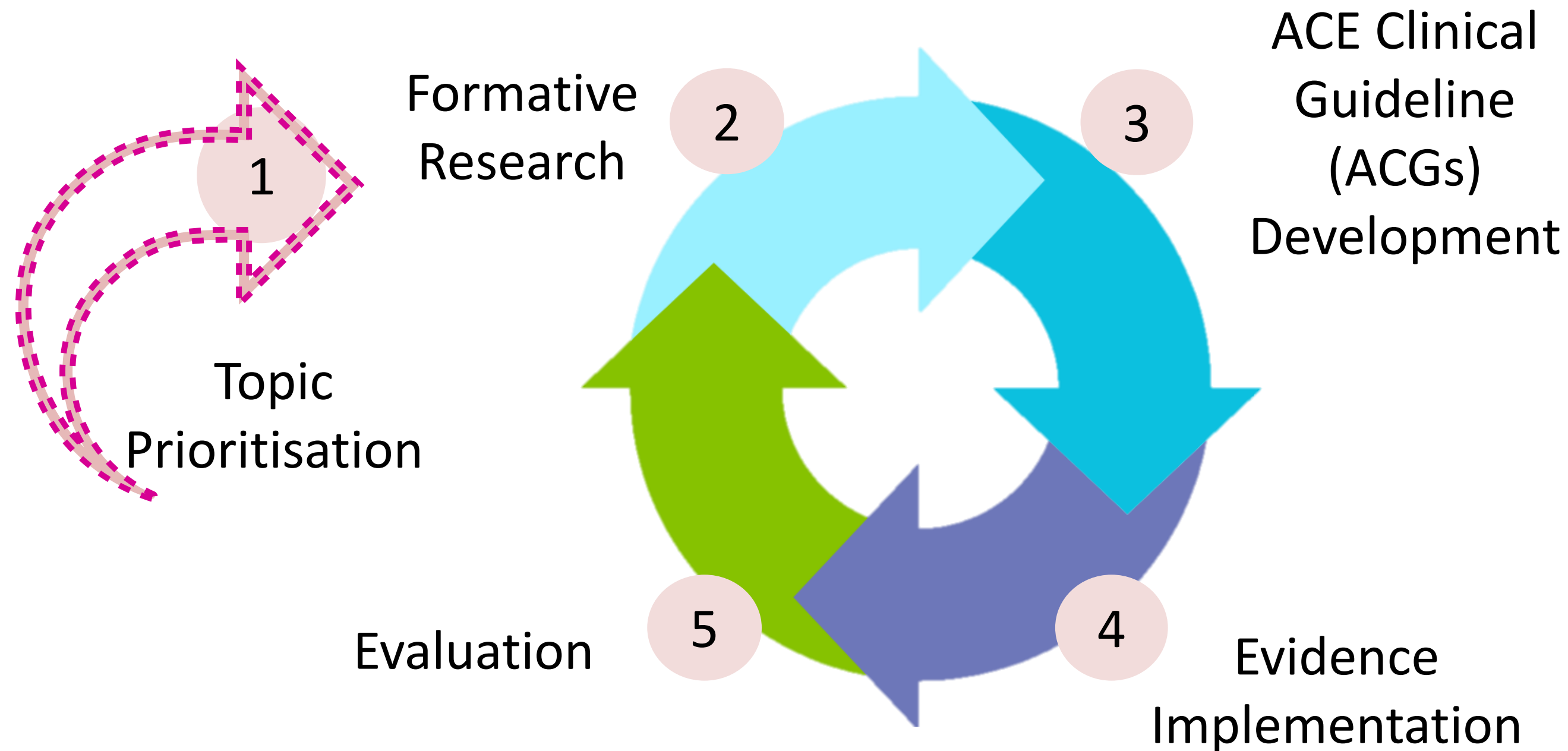




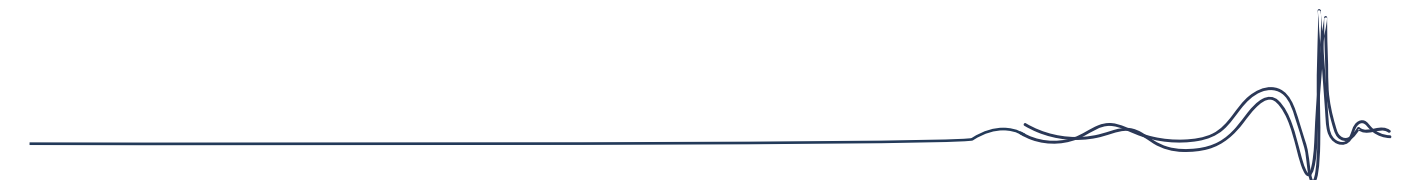
2. A guideline unadopted is a parachute unused



# Work at the Evidence to Practice Office (ETPO)



ETPO's key stakeholder group is the **providers** (i.e. healthcare professionals)





## Goal of the evidence implementation team

To get people to “pull the parachute cord”

**Implementation strategies  
at the individual clinician level**



Educational  
visits



Clinician  
collaterals



Patient  
resources



Educational  
meetings/  
Webinars

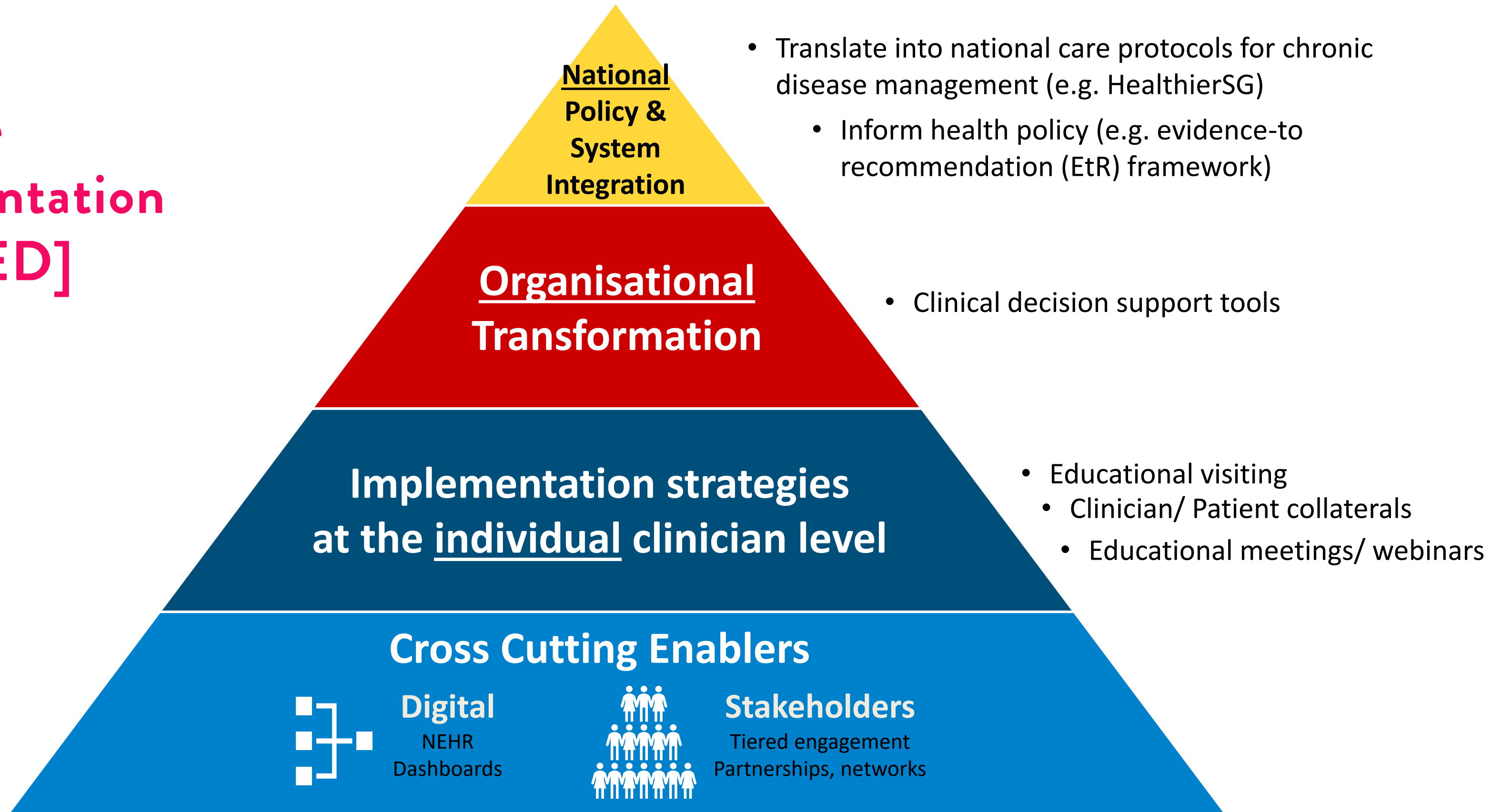


E-direct  
mailers





# Evidence implementation [REVISED]



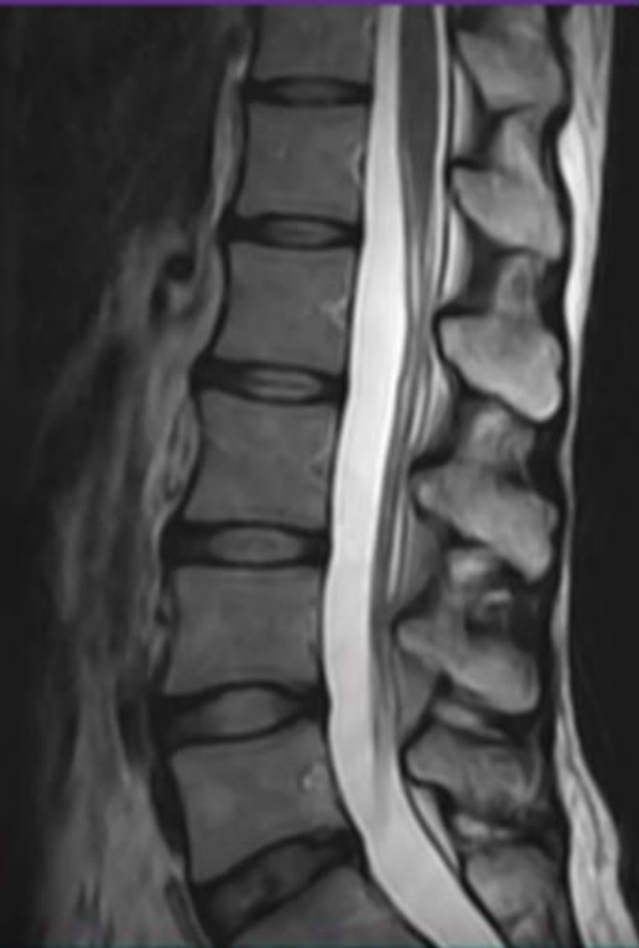


### ACE CLINICAL GUIDANCE

Published: 1 October 2020  
www.ace-hta.gov.sg



## When to order MRI for low back pain



Objective	Scope	Target audience
To enhance appropriate use of magnetic resonance imaging (MRI)	MRI of the lumbar spine for diagnostic investigation of low back pain	This clinical guidance is relevant to all healthcare professionals ordering MRI of the lumbar spine

# 4%

Reduction in inappropriate orders

### Original Article

## Implementing appropriateness criteria for use of imaging technology (Project ACUITY) in magnetic resonance imaging of the lumbar spine: a Singapore experience

Hiok Yang Chan<sup>1</sup>, MRCS, FRCR, Gita Yashwantrao Karande<sup>1</sup>, MBBS, FRCR, Cher Heng Tan<sup>2</sup>, MBBS, FRCR, Yeong Huei Ng<sup>3</sup>, MBBS, FRCS, Meng Ai Png<sup>1</sup>, MBBS, FRCR, Valentina Ricci<sup>4</sup>, Adelina Young<sup>4</sup>, MPH, Lai Peng Chan<sup>1</sup>, MBBS, FRCR

<sup>1</sup>Department of Diagnostic Radiology, Singapore General Hospital, <sup>2</sup>Department of Diagnostic Radiology, Tan Tock Seng Hospital, <sup>3</sup>Department of Orthopaedic Surgery, Singapore General Hospital, <sup>4</sup>Agency of Care Effectiveness, Ministry of Health, Singapore





*Botanic Gardens,  
Singapore*

### 3. What does success look like?

*“If a tree falls in the forest & no one is around to hear it, does it make a sound?”*



# Promising indicators



Integration into  
care protocols

**12 HealthierSG Care  
Protocols** reviewed &  
enhanced based on ACG  
contents



**461**

healthcare professionals  
**49% higher vs 2023**



received **427 continuing  
professional education  
(CPE) hours** via T2DM  
educational visiting & UTI  
webinar



Stakeholder  
consultations

**26 healthcare professionals**  
Interviewed as part of identifying  
practice gaps and facilitators



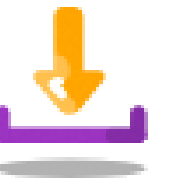
Increased ACG  
website traffic

**164,231**  
ACG page views



Increased ACG  
downloads

**58,426**  
ACG downloads



Increased  
engagement rates

**972 total engagement** on  
LinkedIn

**49% higher vs 2023**



ACG publicity

**48 publicity pieces**  
(electronic Direct Mailers,  
LinkedIn posts & newsletter  
articles)





# Testimonials from Stakeholders



Barriers and enablers for primary care doctors in optimising ACEi/ARBs and using SGLT2i in patients with early-stage CKD: Summary of findings and associated potential strategies



**Dr Sky Koh**  
NUP

"Fantastic work by yourself and your team! Thanks so much for that important piece (**CKD report**), for which I will be sharing further at our clinic heads meeting. Will this piece be available on ACE website?"



**Dr Christopher Chong**  
Central North PCN

"I really enjoyed and benefitted from the **educational visiting session**. It was pitched at the right level, timing and duration. 40min well spent and GPs involved were all well engaged. Keen to offer it our other subgroups in our PCN."



Who We Are ▾ Healthcare Professionals ▾ Patients & Community ▾ Resources ▾ News ▾

Home > Healthcare Professionals > ACE Clinical Guidances (ACGs)

## ACE Clinical Guidances (ACGs)



**Policy colleagues in MOH**

"...ACGs are the "gospel of truth" and we struggle where there is none...if we are unsure, we just ask ETPO!"

"...ACGs lead to changes in polyclinic guidelines and any publication is seen as a significant event...the moment the ACG dropped, the WhatsApp group [chat] lit up"





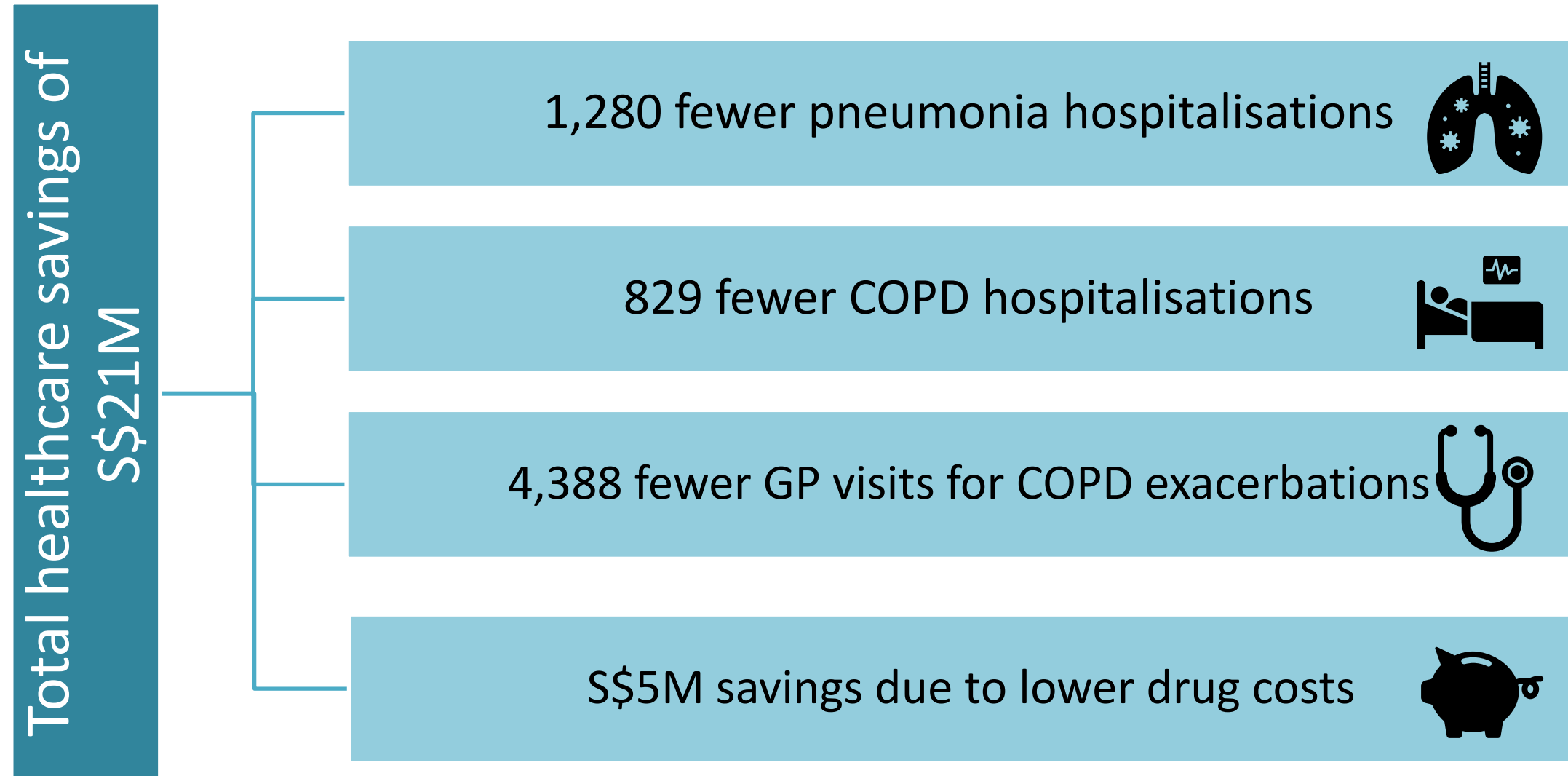
# g-i-n.net Saving costs, Improving health outcomes: COPD example

**Subsidy listing** of a LAMA (umeclidium), and a LAMA/LABA (umeclidinium/vilanterol) to address high clinical need and affordability



Issuance of **ACG** to encourage appropriate prescribing of COPD maintenance therapies

Using data from 2019 to 2021 and projected for 5 years:



COPD – chronic obstructive pulmonary disease  
LAMA – long-acting muscarinic antagonist  
LABA – long-acting beta agonist  
ICS – inhaled corticosteroids

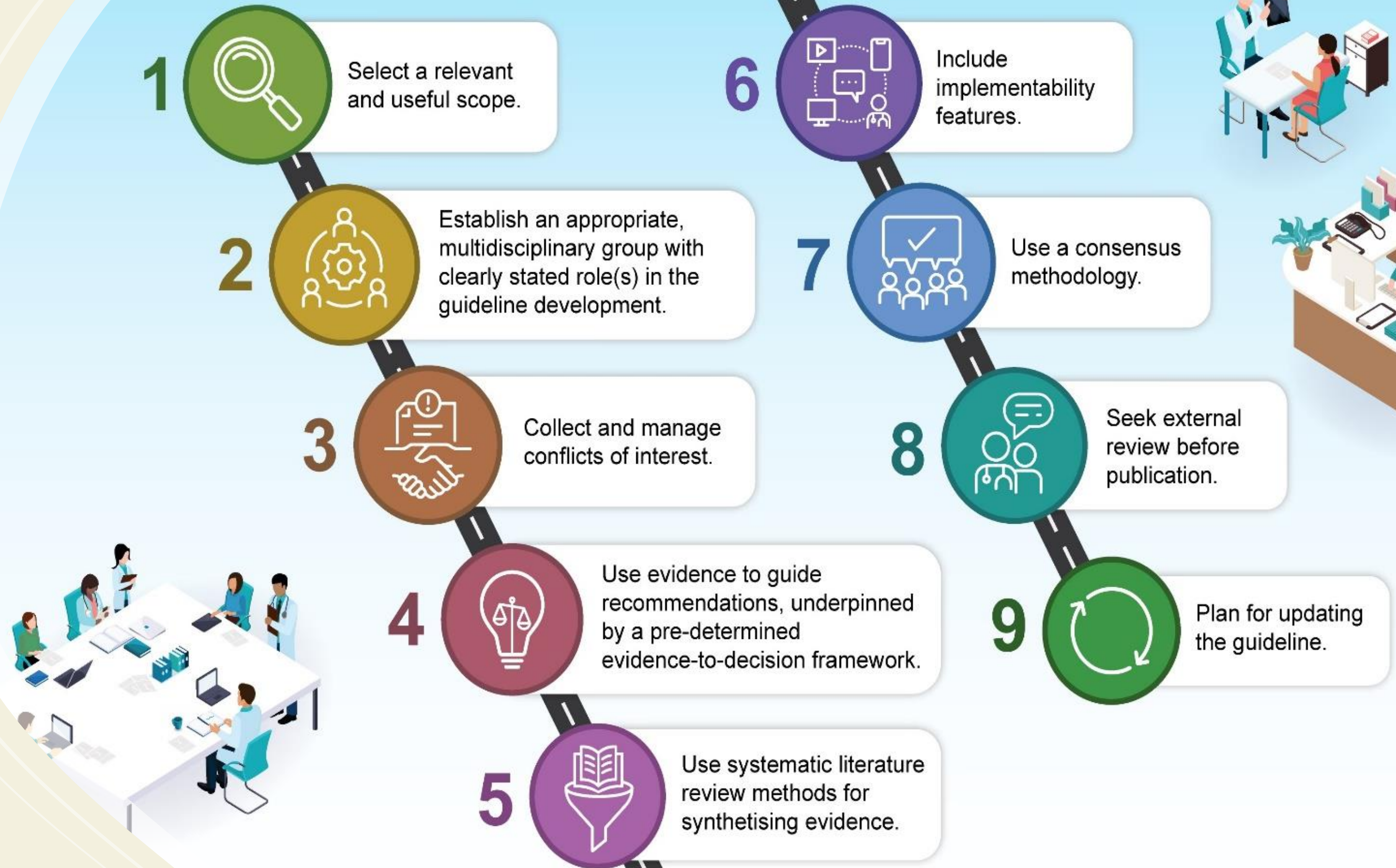




**Next steps?**



# ACE's Guidelines for Guidelines (G4G)







g-i-n.net

# Building up the right fundamentals for local external guideline developers



**Value Based Healthcare Pre-conference workshop:  
Best Practices for Guidelines Development**

*by Prof Zachary Munn*

*"The workshop was great...it helped to **crystallise our conceptual understanding of ACE and how to apply the principles**. Should be a regular workshop so that more can benefit from it. I enjoyed it thoroughly."*

*- A/Prof Dennis Seow, Sr Cons, Head of Geri Med, SGH*





NIKEZ

# CONNECTION

for respective & collective implementation success and real impact



Zac Munn



AWMF



NICE & SIGN



# Thank you

phyllis\_kim@moh.gov.sg

#GIN2025

